

wood.

The page features two large, overlapping purple circles. The circle on the left is partially cut off by the edge of the page. The circle on the right is a thick ring with a white center, also partially cut off by the right edge of the page.

GoTechnology[®] hub2

v1.40 Release Notes

1. About this Document

1.1. Purpose

This document provides a brief overview of the changes made between V1.39.1 and V1.40 of GoTechnology hub2, along with where further details of each change can be found within the updated functional specification, in addition to a listing of completed bug fixes and known issues.

2. IE Support

V1.40 is the last version of hub2 that supports Internet Explorer 11. Future releases are not guaranteed to operate successfully in IE 11. We recommend Microsoft Edge or Google Chrome as supported alternatives.

3. Fixed Issues

The following issues have been fixed in version 1.40 of hub2.

Case	Title [sic]	Details
79889	Process Builder - "Change Stage" button broken	Nothing was happening when clicking on the Change Stage button in the Process Builder. This has been fixed.
N/A	Process Builder - Labels on custom fields	Sometimes incorrect labels were displayed for Custom Fields within the Process Builder. These have been corrected.
N/A	Process Builder - Labels on Stage Options	The labels that were displayed on Stage Options could be confusing. These have been changed to be clearer.
77614	Sub System Names appearing as Dates in the History	Sub Systems with names that could be interpreted as a date were being displayed in the History as dates (for example a Sub System named 2001-05 was displayed as 1 May 2001). This has been changed so that the Sub System name now displays correctly.
78881	Handover Report generating an error	Handover Summary Reports that are grouped by System were generating an error if a column had several handovers that belong to the same Handover Type and System. This has been fixed and the report will now generate successfully.
N/A	Order Field on Handover Type	The Order field on the Handover Type Edit page has been moved higher up the page to improve usability.

4. Known Issues

A full list of "Known Issues" can be found at <https://qedi-gotechnology.github.io/>

5. Features



The following functionality has been added in v1.40:

- Tag Set Detailed Report
- Custom Fields on Tag Sets
- Tag ITRs now listed on Tags and Cables grids on View Tag Set page
- Searching Tag ITRs by Tagged Item Custom Fields
- DOTX on Punch List Items
- PLI Search now includes Tag PWL fields
- Handover Completion Status
- Rejecting Tag ITRs
- Increased size of Stage Field Name in Process Builder
- Added Tag PWL field on Punch List Item Detailed Report



5.1. Tag Set Detailed Report

Select Details

Report Code

Report Name

Report Category

	Column Name	Header on Report	Title (Above Header)	Pdf Width	Xlsx Width
↕	Name	<input type="text" value="Name"/>	<input type="text"/>	10	20
↕	Description	<input type="text" value="Description"/>	<input type="text"/>	20	40
↕	Discipline	<input type="text" value="Discipline"/>	<input type="text"/>	10	20
↕	Tag Set Cables	<input type="text" value="Tag Set Cables"/>	<input type="text"/>	10	20
↕	Tag Set Tags	<input type="text" value="Tag Set Tags"/>	<input type="text"/>	10	20

Figure 1. Creation of a Tag Set Detailed Report

Detailed Reports can now be generated for Tag Sets. To create one go to Report -> Create New Detailed Report and select "Tag Set" as the Type, and then select the columns to include in the report.

Associated Cables and Tags can also be included in the Report.

Tag Set Detailed Report				
Refit				
Name	Description	Discipline	Tag Set Cables	Tag Set Tags
Tag Set 1	Example Tag Set	A		01-TP-003
Tag Set 1	Example Tag Set	A		076-E3981
Tag Set 1	Example Tag Set	A	8207-4B-P01	
Tag Set 1	Example Tag Set	A	8207-4R-1A	
Tag Set 2	Example Tag Set	B		076-E3983
Tag Set 2	Example Tag Set	B	8207-4R-P01	
Tag Set 2	Example Tag Set	B	8207-4R-1C	
Tag Set 2	Example Tag Set	B	8207-4R-1B	

Figure 2. Example PDF of a Tag Set Detailed Report

Tag Set Detailed Reports can also be run as Scheduled Reports. After creating the report, go to Admin -> Set up Scheduled Reports -> click Add -> select the new report.



5.2. Custom Fields on Tag Sets

Tag Set		
Name	Description	Field Type
Tag Set Boolean CF	Tag Set Boolean Custom Field	Boolean
Tag Set String CF	Tag Set String Custom Field	String
Tag Set Ref Table CF	Tag Set Reference Table Custom Field	Reference Table
Tag Set Date CF	Tag Set Date Custom Field	Date

Figure 3. Tag Set Custom Fields

Tag Sets now include Custom Fields. Any Custom Fields created on Tagged Item now appear on Tag Sets, and Custom Fields can be added specifically to Tag Sets.

To create new Custom Fields for Tag Sets, go to Admin -> Custom Fields and scroll down to the Tag Set section, and click "Edit Tag Set".

5.3. Tag ITRs on Tags and Cables Grids

Tags			
Name	Description	Sub System	Tag ITR(s)
01-TP-003	Pipeline flushing	AL-045-501	A06A, A09A
076-E3981	Instrument Cable 1Pr x 1.5mm ²	AL-072-501	I16A

Cables			
Name	Description	Sub System	Tag ITR(s)
8207-4B-P01	Lighting Circuit Cable 3 x 2.5mm ²	AL-083-501	E02B, E02A
8207-4R-1A	Lighting Circuit Cable 3 x 2.5mm ²	AL-083-501	E02B, E02A

Figure 4. Viewing a Tag Set

When viewing a Tag Set, the ITRs for any associated Tags and Cables are now listed at the right-hand side of the grids.



5.4. Searching Tag ITRs by Tagged Item Custom Fields

Custom Fields		
Tagged Item		
Name	Description	Field Type
Room	Details of Rooms containing Equipment	Reference Table
Zone	Details of Zones containing Equipment	Reference Table
Safety Classes	Different Classes that define the Safety Rating of Equipment	Reference Table
Panel No	Number of the Panel associated with a piece of Equipment	String
Equip Reg Complete	Equipment Registration Request Report Complete	Boolean
Date Label Fitted	Date that the Label was fitted to a piece of Equipment	Date

Figure 5. Example of Custom Fields on Tagged Item

Equip Reg Complete:

Room:

Zone:

Panel No:

Safety Classes:

Figure 6. The Tagged Item Custom Fields shown as Search Filters on the Tag ITR Search page

The Tag ITR search page now includes search filters for any Custom Fields that exist on the Tagged Item.

5.5. DOTX on Punch List Items

PLI Category: Demo

Name Demo

Description Template Demo Category

PLI Category Document

Sign Offs

Label	Sign Off Type
Accepted	Complete
Cleared	Required



Figure 7. "Add DOTX Template" button on the PLI Category View Page

DOTX Templates can now be used on Punch List Items. To add a DOTX Template, go to Ref Tables -> Punch List Item Categories -> View a Category -> Click "Add DOTX Template" to upload the file.

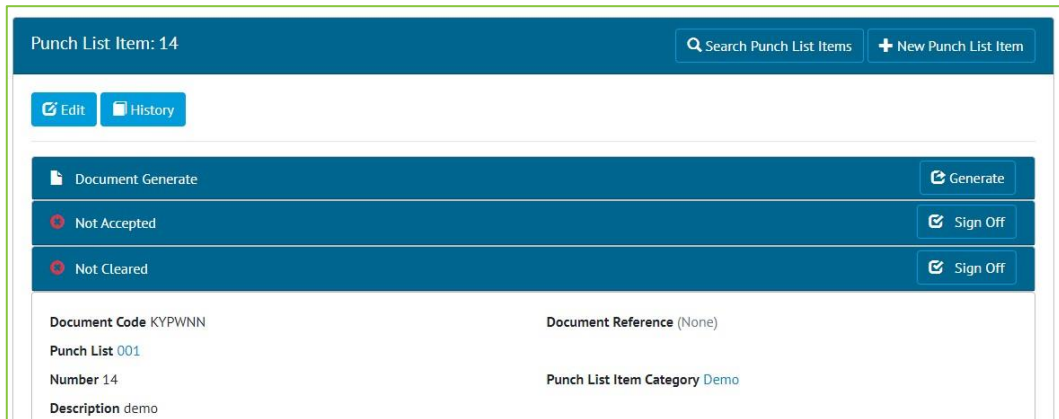


Figure 8. "Generate" button on the PLI View Page

Once a template has been added to a Punch List Item Category, any Punch List Items that belong to that Category will have a "Generate" button. When the button is clicked it will generate the document, populating all bookmark fields with data and downloading the final file.

Punch List Item documents can also be generated from the Punch List Item Search page.

5.6. PLI Search Now Includes Tag PWL Fields

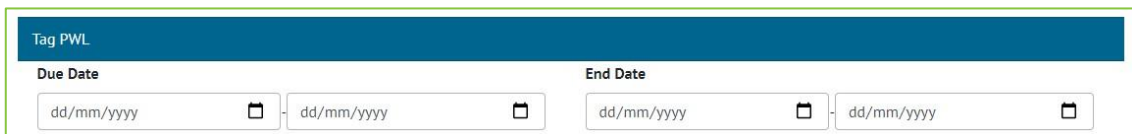


Figure 9. Tag PWL Fields on the PLI Search Page

The Punch List Item Search page now includes a Tag PWL section with Due Date and End Date Search fields.

5.7. Handover Completion Status

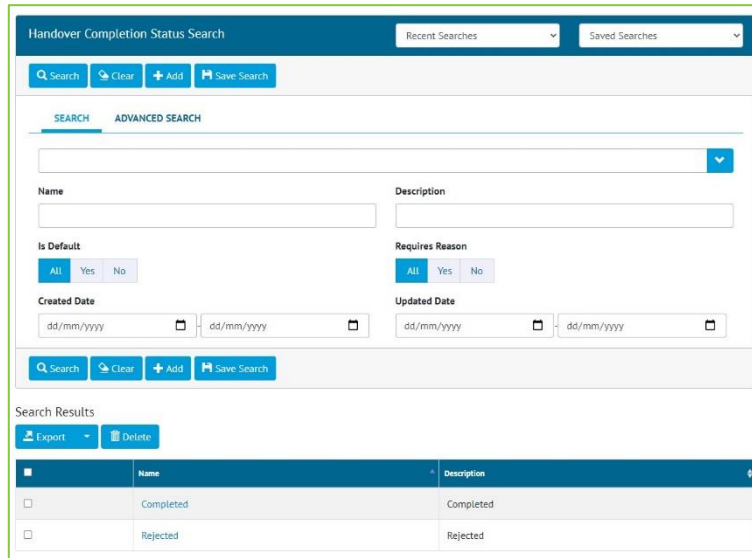


Figure 10. Handover Completion Status Search Page

Completion Statuses for Handovers have been added. To configure the statuses available, go to Ref Tables -> Handover Completion Statuses.

The Handover Completion Status field is not yet linked to Handovers, but that will be included in the next release.

5.8. Reject a Tag ITR

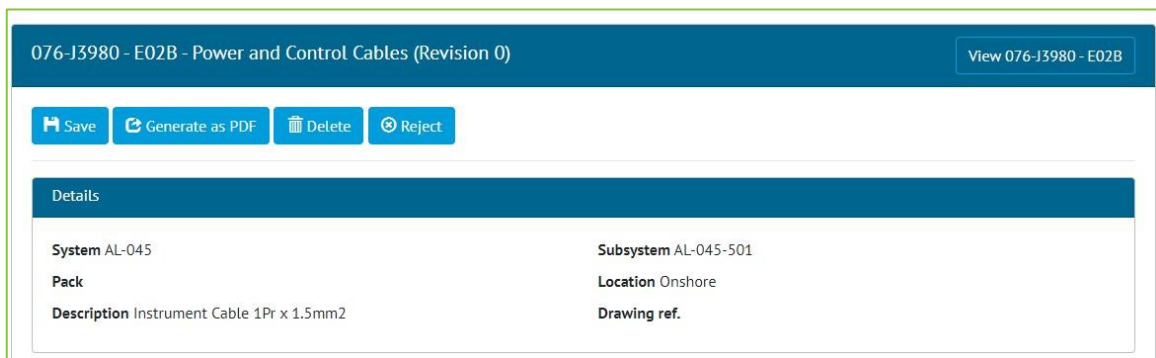


Figure 11. Tag ITR Edit Document page showing the new Reject button

Once a Tag ITR has been signed off, an Admin user may now reject it using the “Reject” button on the Edit Document page.

Site Admins may reject a Tag ITR up until the Complete Sign Off has been made. After this only a Global Admin user may reject it.



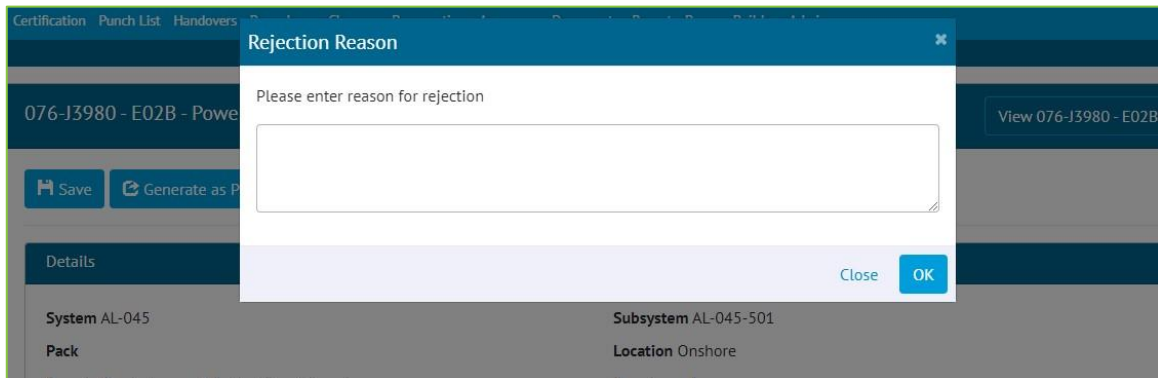


Figure 12. Entering a Rejection Reason

When rejecting, a reason must be given, and this is recorded in the History for the Tag ITR.

After rejection, the Tag ITR Completion Status is changed to "Rejected" and all sign offs are removed. All fields become editable again allowing the Tag ITR to be recompleted.

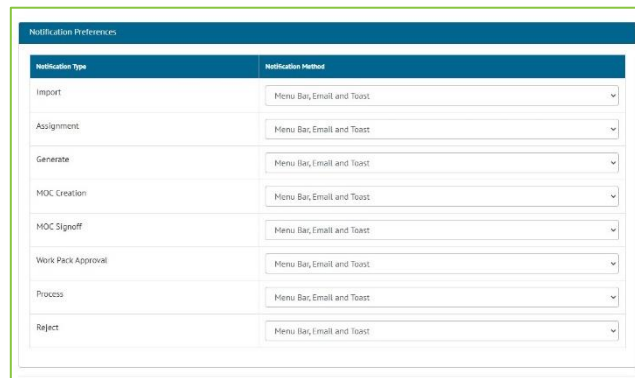


Figure 13. Configuring Notification Preferences

When a Tag ITR is rejected, a notification is sent to the person who made the first sign off. Users can configure their preferences for this type of notification by clicking on their username at top right and choosing User Settings. Notifications can be sent as email, toast notifications or appear in the menu bar and notifications panel.

5.9. Increased Size of Stage Field on Process Type

The Stage Field Name on Process Types has been increased to allow up to a maximum of 100 characters.



5.10.Tag PWL field on Punch List Item Detailed Report

Is Over Task	Area
Area Description	Module
Module Description	PWL
PWL Description	PWL Due Date
Assigned To	Document Reference
Raised Date	Raised By

Figure 14. New fields when creating a Punch List Item Detailed Report

The following fields are now available to add to a Punch List Item Detailed Report:

- PWL
- PWL Description
- PWL Due Date